



EDGARSSON SECURITY DESIGNS

# **Voyager Programmer**

***USB DRIVER INSTALLATION MANUAL***

***Version: USB\_Driver\_Installation\_Manual\_v1.0***

# Figures

Figure 1: Select unknown device (IARLPC2378) .....	5
Figure 2: Right click to select update option. ....	6
Figure 3: Select manual installation.....	6
Figure 4: Select all devices. ....	7
Figure 5: Select Have Disk option. ....	7
Figure 6: Select appropriate driver file. ....	8
Figure 7: Driver file selected. ....	8
Figure 8: Warning message 1.....	9
Figure 9: Warning message 2.....	9
Figure 10: Driver installed. ....	10
Figure 11: End look after successful driver installation. ....	10

# **1 INTRODUCTION**

For user to use GUI application on PC, one has to install USB driver to be able to connect to Edgarsson GSM communication devices.

The user has different drivers available for different OS, one is for Windows XP and one is for WINDOWS7 64bit.

## 2 OS DEPENDANT DRIVERS

User has to select appropriate driver for his OS. See table below.

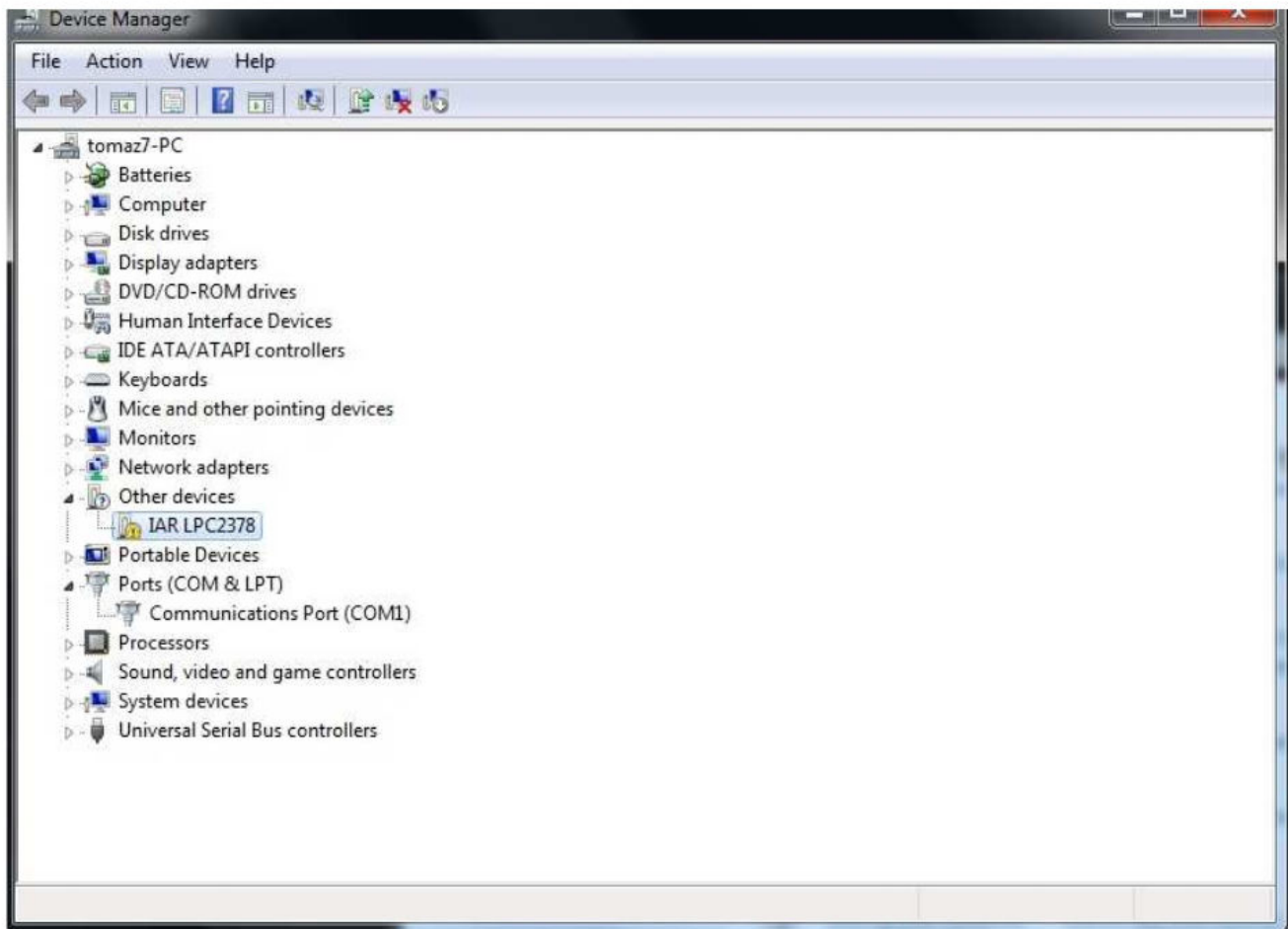
Driver name	Windows	Windows7	Windows 7 64bit
iarvircomport.inf	x	x	
<i>iarvircomport_x64_v11.inf</i>			x

### 3 INSTALATION OF USB DRIVER ON WINDOWS 7

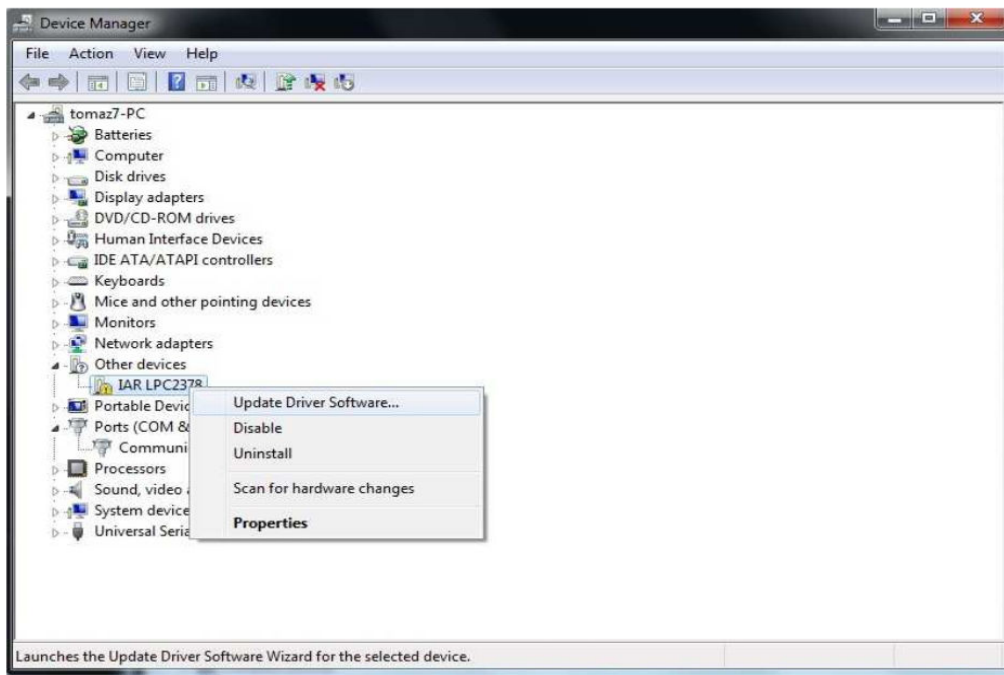
To install USB driver on WINDOWS 7, follow steps described in this chapter.

**IMPORTANT**      **Select correct installation file for your Operating System!!**

First connect communication device and PC with USB cable. PC will notify the user to install a USB driver. Right click on "IAR LPC2378" and select "**Select Driver Software**" option.

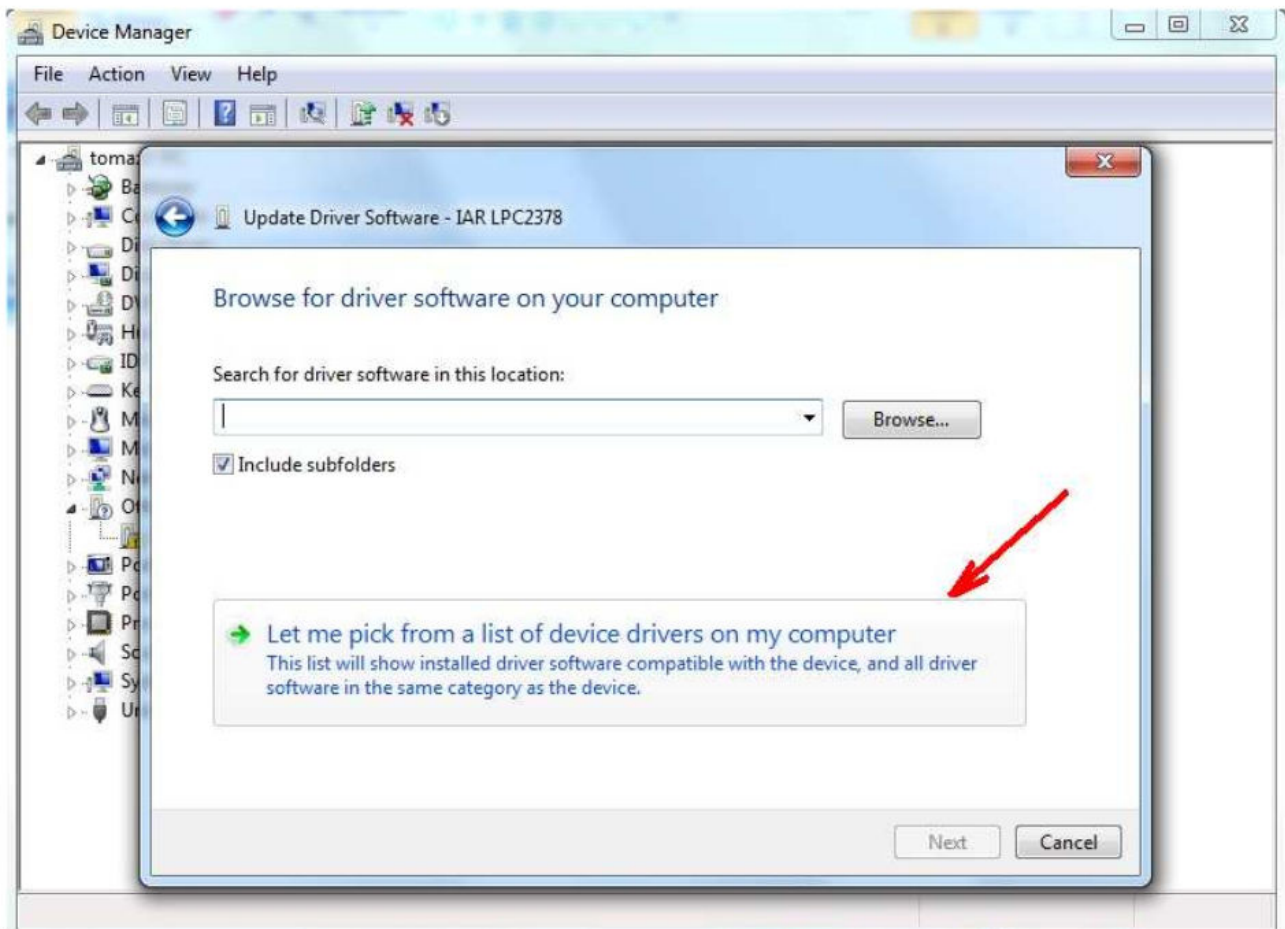


**Figure 1: Select unknown device (IAR LPC2378).**

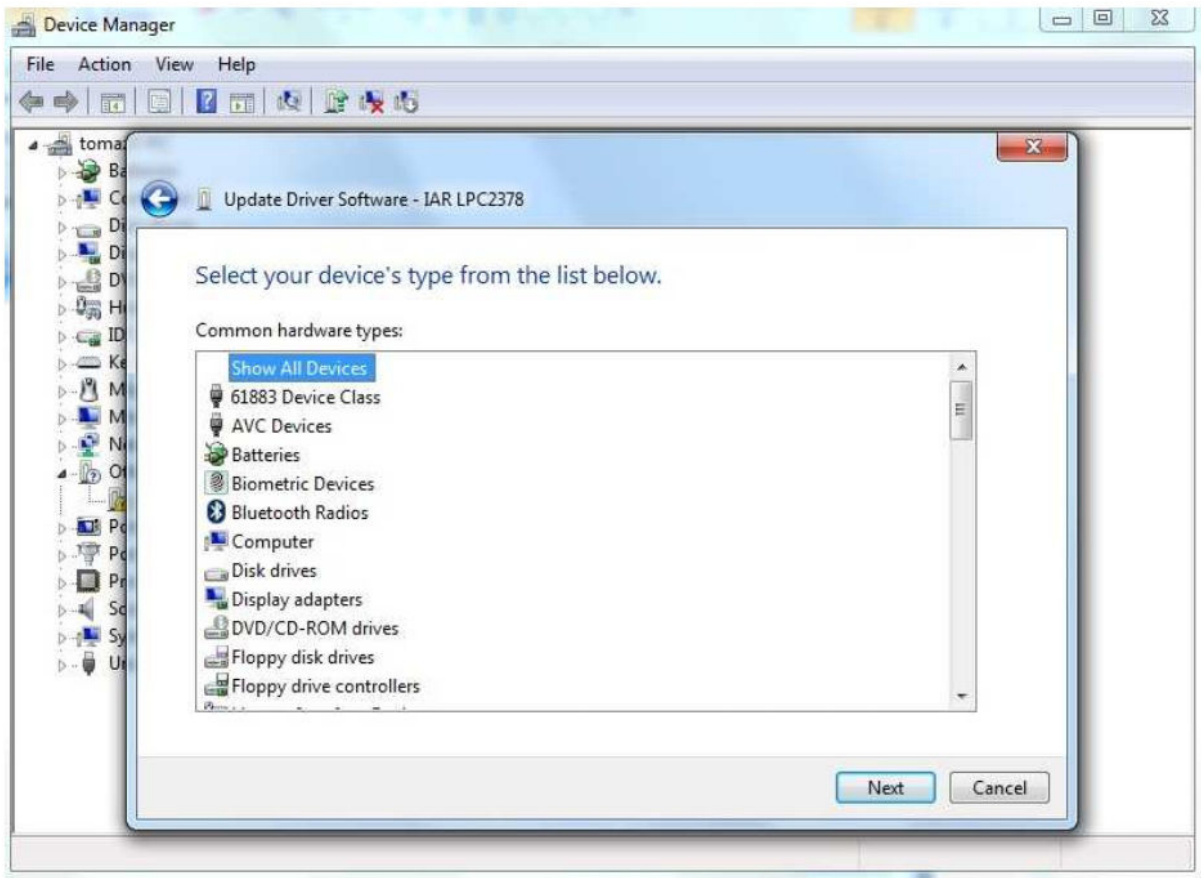


**Figure 2: Right click to select update option.**

Click on option “Let me pick from a list of device driver on my computer”.



**Figure 3: Select manual installation.**



On this window select option **“Show All Devices”** and click **“Next”**.

Figure 4: Select all devices.

In this window select option **“Have Disk”**.

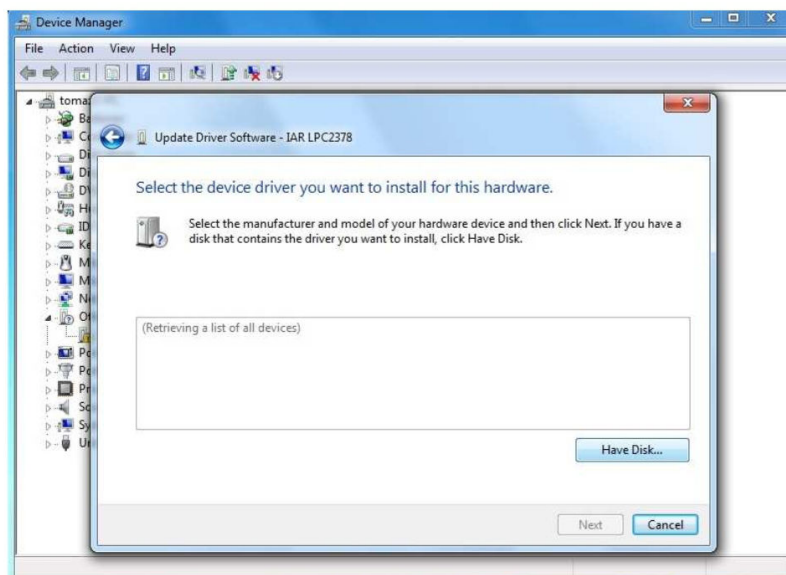
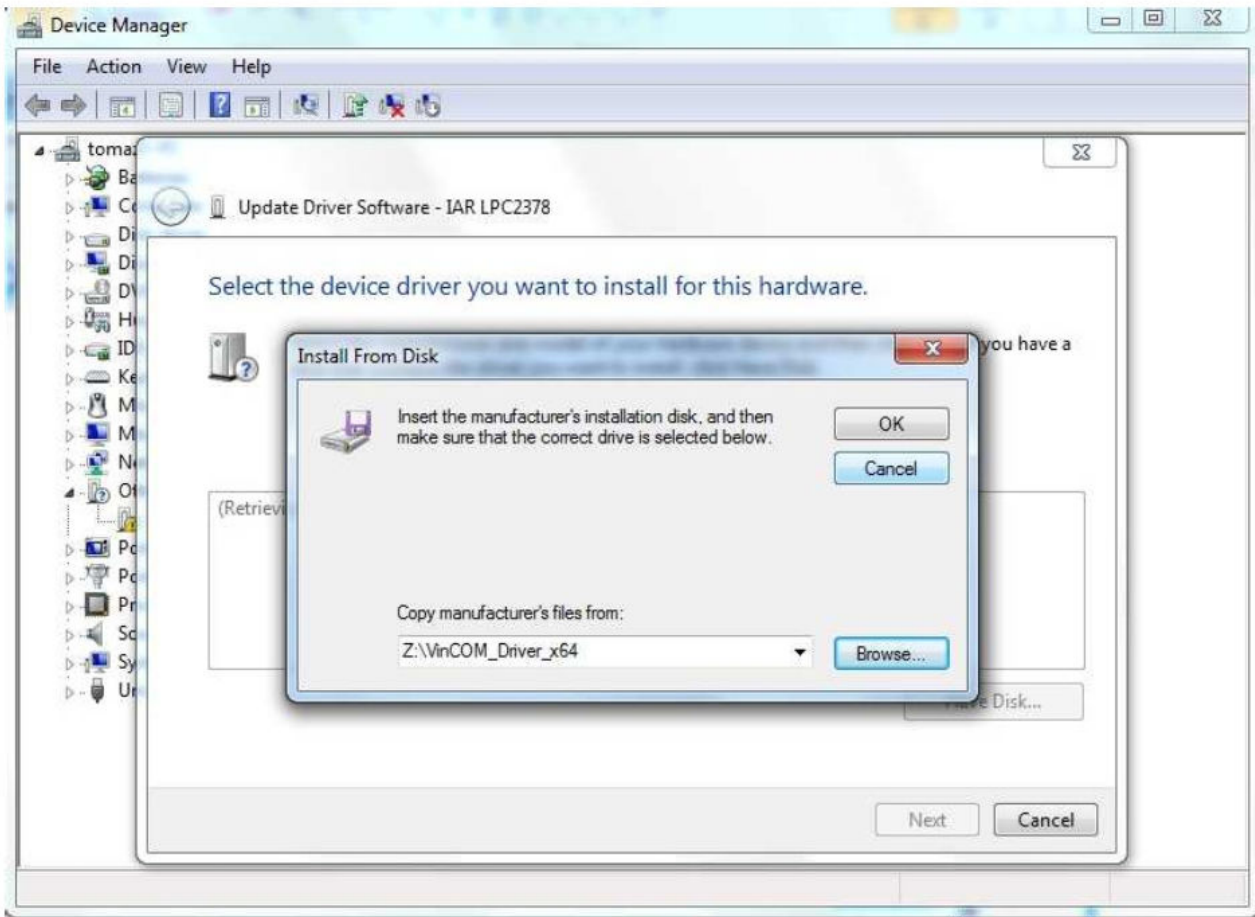
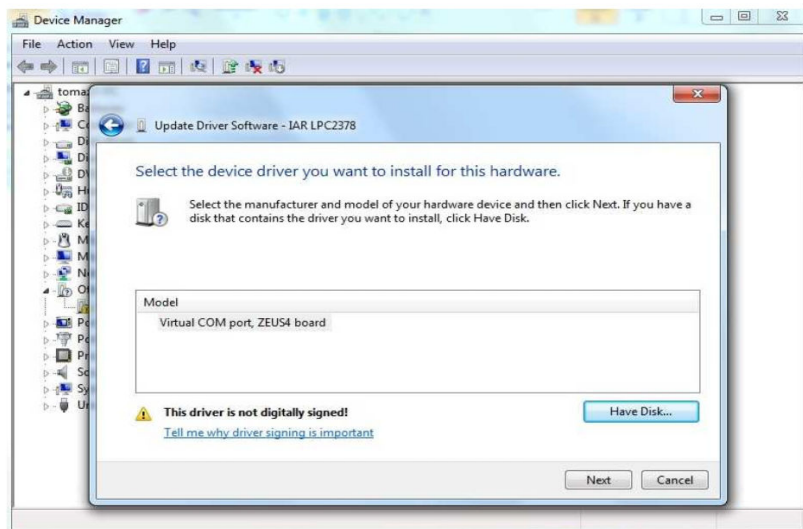


Figure 5: Select Have Disk option.



On this step the user must select appropriate installation file and click **“OK”**.

Figure 6: Select appropriate driver file.



After file is selected click **“Next”**.

Figure 7: Driver file selected.



On this step user can receive warning messages. Click **“OK”**.

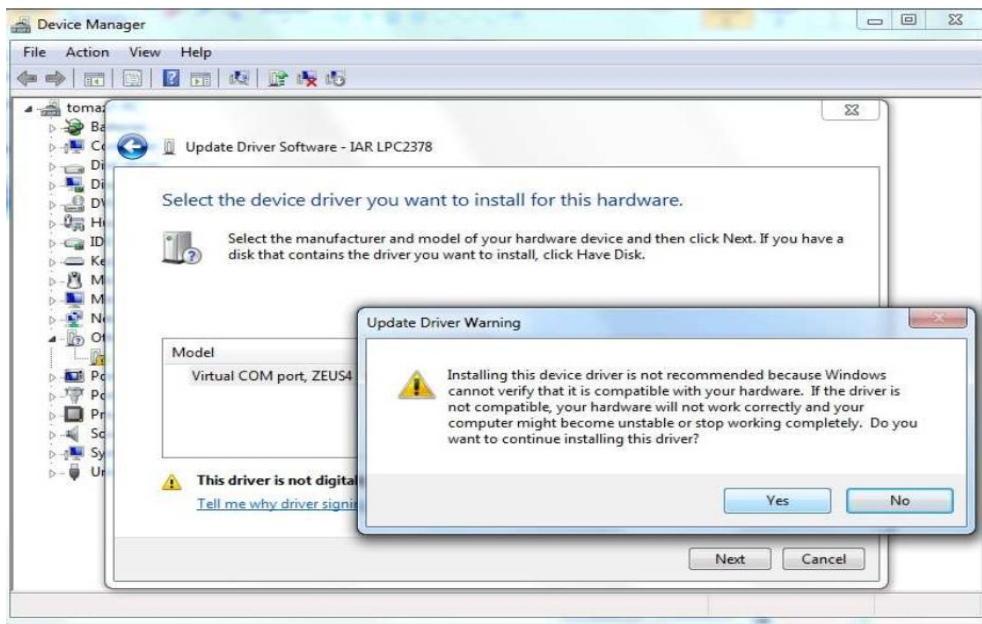


Figure 8: Warning message 1.

Warning message 2. Select options **“Install this driver software anyway”**.

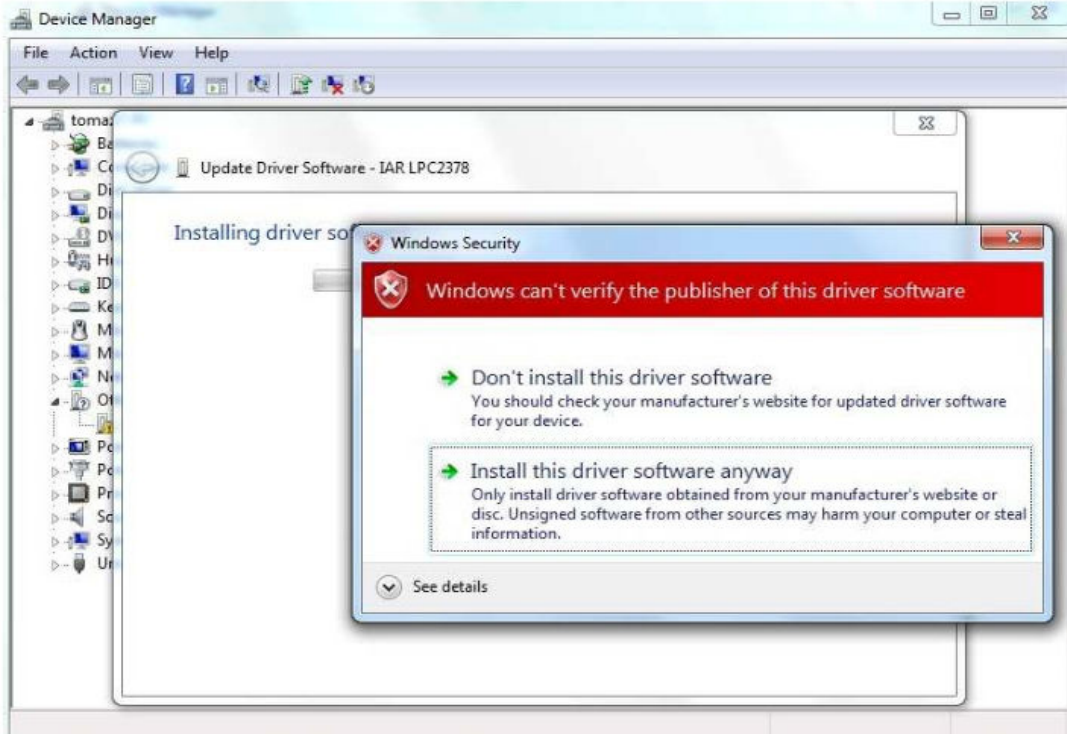


Figure 9: Warning message 2.

End of driver installation, click **“Close”**.

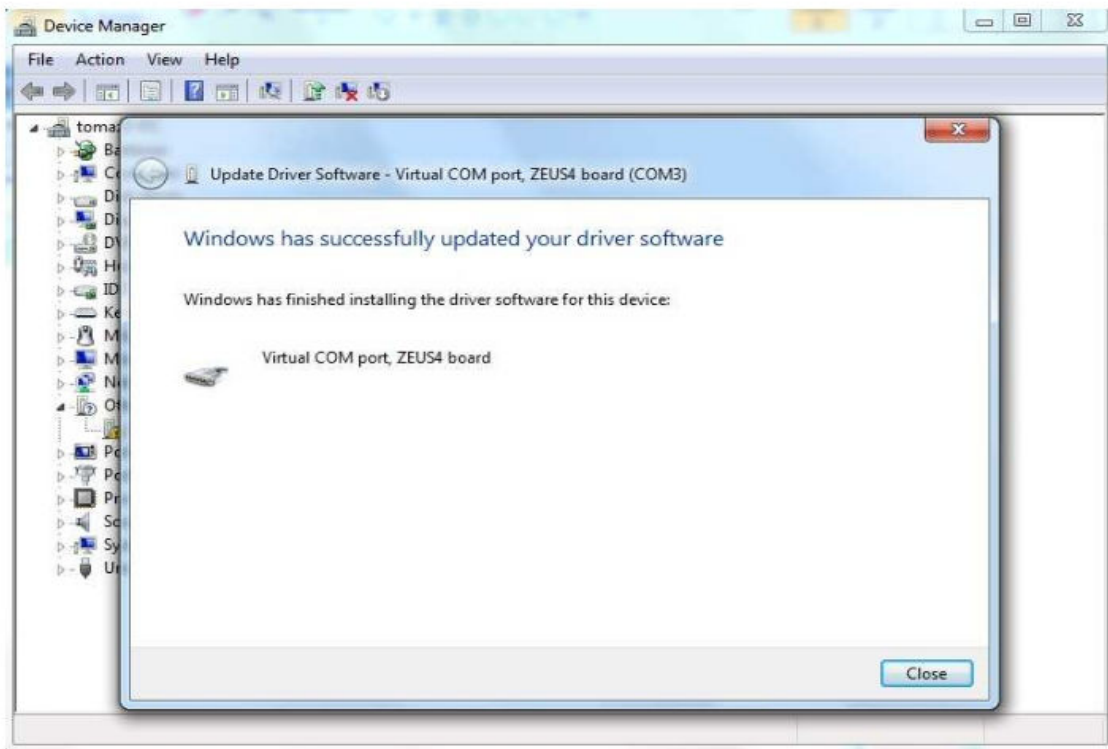
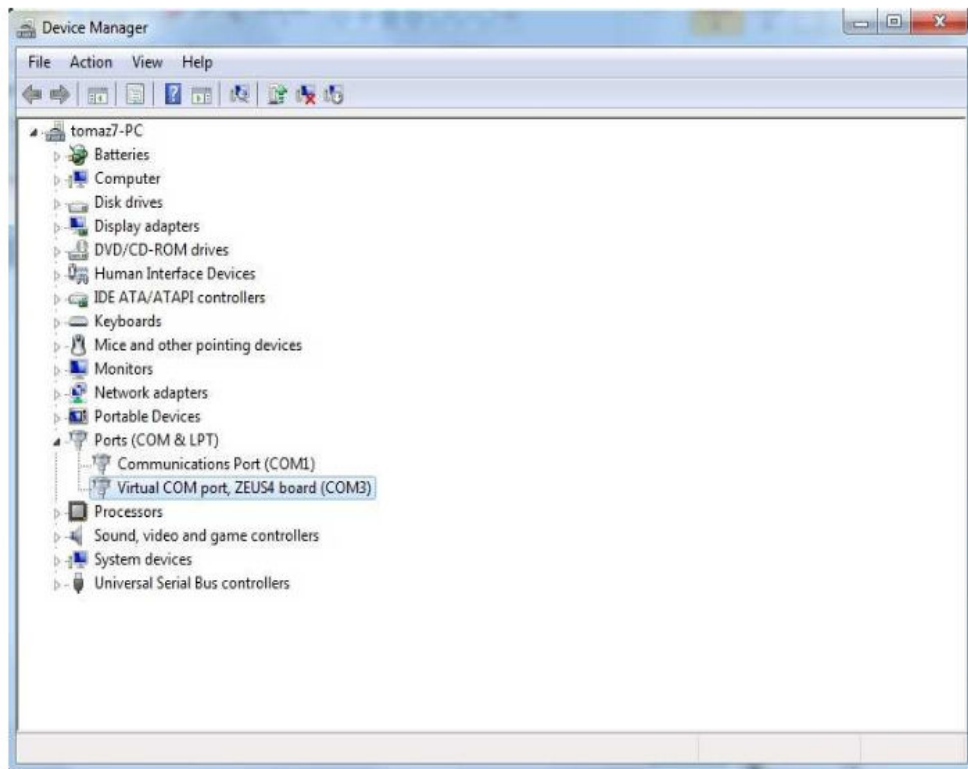


Figure 10: Driver installed.



End of driver installation.

Figure 11: End look after successful driver installation.